

Q:1

Topic Name:Mathematics-Section A

ItemCode:101661

Let $A = \{z \in \mathbb{C} : 1 \leq |z - (1 + i)| \leq 2\}$

and $B = \{z \in A : |z - (1 - i)| = 1\}$. Then, B :

Question:

- A is an empty set
- B contains exactly two elements
- C contains exactly three elements
- D is an infinite set

Q:2

Topic Name:Mathematics-Section A

ItemCode:101662

Question: The remainder when 3^{2022} is divided by 5 is :

- A 1
- B 2
- C 3
- D 4

Q:3

Topic Name:Mathematics-Section A

ItemCode:101663

The surface area of a balloon of spherical shape being inflated, increases at a constant rate. If initially, the radius of balloon is 3 units and after 5 seconds, it becomes 7 units, then its radius

Question: after 9 seconds is :

- A 9
- B 10
- C 11
- D 12

Q:4

Topic Name:Mathematics-Section A

ItemCode:101664

Bag A contains 2 white, 1 black and 3 red balls and bag B contains 3 black, 2 red and n white balls. One bag is chosen at random and 2 balls drawn from it at random, are found to be

1 red and 1 black. If the probability that both balls come from Bag A is $\frac{6}{11}$, then n is equal to

Question: _____.

- A 13
- B 6
- C 4
- D 3

Q:5

Topic Name:Mathematics-Section A

ItemCode:101665

Let $x^2 + y^2 + Ax + By + C = 0$ be a circle passing through $(0, 6)$ and touching the parabola $y = x^2$ at $(2, 4)$. Then $A + C$ is equal to _____.

Question:

- A 16
- B $88/5$
- C 72
- D -8

Q:6

Topic Name:Mathematics-Section A

ItemCode:101666

The number of values of α for which the system of equations :

$$x + y + z = \alpha$$

$$\alpha x + 2\alpha y + 3z = -1$$

$$x + 3\alpha y + 5z = 4$$

Question: is inconsistent, is

- A 0
- B 1
- C 2
- D 3

Q:7

Topic Name:Mathematics-Section A

ItemCode:101667

If the sum of the squares of the reciprocals of the roots α and β of the equation $3x^2 + \lambda x - 1 = 0$ is 15, then $6(\alpha^3 + \beta^3)^2$ is equal to :

Question:

- A 18
- B 24
- C 36
- D 96

Q:8

Topic Name:Mathematics-Section A

ItemCode:101668

Question: The set of all values of k for which $(\tan^{-1}x)^3 + (\cot^{-1}x)^3 = k\pi^3, x \in \mathbf{R}$, is the interval :

Download all NOTES and PAPERS at StudentSuvidha.com

A	$\left[\frac{1}{32}, \frac{7}{8} \right)$
B	$\left(\frac{1}{24}, \frac{13}{16} \right)$
C	$\left[\frac{1}{48}, \frac{13}{16} \right]$
D	$\left[\frac{1}{32}, \frac{9}{8} \right)$

Q:9

Topic Name: Mathematics-Section A

ItemCode:101669

Let $S = \{\sqrt{n} : 1 \leq n \leq 50 \text{ and } n \text{ is odd}\}$.

Let $a \in S$ and $A = \begin{bmatrix} 1 & 0 & a \\ -1 & 1 & 0 \\ -a & 0 & 1 \end{bmatrix}$.

If $\sum_{a \in S} \det(\text{adj } A) = 100\lambda$, then λ is equal to :

Question:

A	218
B	221
C	663
D	1717

Q:10

Topic Name: Mathematics-Section A

ItemCode:101670

For the function

$f(x) = 4 \log_e(x-1) - 2x^2 + 4x + 5$, $x > 1$, which one of the following is NOT correct ?

Question:

A	f is increasing in $(1, 2)$ and decreasing in $(2, \infty)$
B	$f(x) = -1$ has exactly two solutions
C	$f'(e) - f''(2) < 0$
D	$f(x) = 0$ has a root in the interval $(e, e+1)$

Q:11

Topic Name: Mathematics-Section A

ItemCode:101671

If the tangent at the point (x_1, y_1) on the curve $y = x^3 + 3x^2 + 5$ passes through the origin, then (x_1, y_1) does NOT lie on the curve :

Question:

A $x^2 + \frac{y^2}{81} = 2$

B $\frac{y^2}{9} - x^2 = 8$

C $y = 4x^2 + 5$

D $\frac{x}{3} - y^2 = 2$

Q:12

Topic Name:Mathematics-Section A

ItemCode:101672

The sum of absolute maximum and absolute minimum values of the function $f(x) = |2x^2 + 3x - 2| + \sin x \cos x$ in the interval $[0, 1]$ is :

Question:

A $3 + \frac{\sin(1) \cos^2(1/2)}{2}$

B $3 + \frac{1}{2} (1 + 2\cos(1)) \sin(1)$

C $5 + \frac{1}{2} (\sin(1) + \sin(2))$

D $2 + \sin\left(\frac{1}{2}\right) \cos\left(\frac{1}{2}\right)$

Q:13

Topic Name:Mathematics-Section A

ItemCode:101673

If $\{a_i\}_{i=1}^n$, where n is an even integer, is an arithmetic progression with common difference

1, and $\sum_{i=1}^n a_i = 192$, $\sum_{i=1}^{n/2} a_{2i} = 120$, then n is equal to :

Question:

A 48

B 96

C 92

D 104

Q:14

Topic Name:Mathematics-Section A

ItemCode:101674

If $x = x(y)$ is the solution of the differential equation $y \frac{dx}{dy} = 2x + y^3 (y + 1)e^y$, $x(1) = 0$; then

Question: $x(e)$ is equal to :

A $e^3(e^e - 1)$

B $e^e(e^3 - 1)$

C $e^2(e^e + 1)$

D $e^e(e^2 - 1)$

Q:15

Topic Name: Mathematics-Section A

ItemCode:101675

Let $\lambda x - 2y = \mu$ be a tangent to the hyperbola $a^2x^2 - y^2 = b^2$. Then $\left(\frac{\lambda}{a}\right)^2 - \left(\frac{\mu}{b}\right)^2$ is equal to :

Question:

A -2

B -4

C 2

D 4

Q:16

Topic Name: Mathematics-Section A

ItemCode:101676

Let \hat{a}, \hat{b} be unit vectors. If \vec{c} be a vector such that the angle between \hat{a} and \vec{c} is $\frac{\pi}{12}$, and

Question: $\hat{b} = \vec{c} + 2(\vec{c} \times \hat{a})$, then $6|\vec{c}|^2$ is equal to :

A $6(3 - \sqrt{3})$

B $3 + \sqrt{3}$

C $6(3 + \sqrt{3})$

D $6(\sqrt{3} + 1)$

Q:17

Topic Name: Mathematics-Section A

ItemCode:101677

If a random variable X follows the Binomial distribution $B(33, p)$ such that $3P(X=0) = P(X=1)$,

then the value of $\frac{P(X=15)}{P(X=18)} - \frac{P(X=16)}{P(X=17)}$ is equal to :

Question:

A 1320

B 1088

C $\frac{120}{1331}$

D $\frac{1088}{1089}$

Q:18

Topic Name: Mathematics-Section A

ItemCode:101678

The domain of the function $f(x) = \frac{\cos^{-1}\left(\frac{x^2 - 5x + 6}{x^2 - 9}\right)}{\log_e(x^2 - 3x + 2)}$ is :

Question:

A $(-\infty, 1) \cup (2, \infty)$

B $(2, \infty)$

C $\left[-\frac{1}{2}, 1\right) \cup (2, \infty)$

D $\left[-\frac{1}{2}, 1\right) \cup (2, \infty) - \left\{\frac{3 + \sqrt{5}}{2}, \frac{3 - \sqrt{5}}{2}\right\}$

Q:19

Topic Name: Mathematics-Section A

ItemCode:101679

Let $S = \left\{\theta \in [-\pi, \pi] - \left\{\pm \frac{\pi}{2}\right\} : \sin\theta \tan\theta + \tan\theta = \sin 2\theta\right\}$. If $T = \sum_{\theta \in S} \cos 2\theta$, then $T + n(S)$

is equal to :

Question:

A $7 + \sqrt{3}$

B 9

C $8 + \sqrt{3}$

D 10

Q:20

Topic Name: Mathematics-Section A

ItemCode:101680

The number of choices for $\Delta \in \{\wedge, \vee, \Rightarrow, \Leftrightarrow\}$, such that $(p \Delta q) \Rightarrow ((p \Delta \sim q) \vee ((\sim p) \Delta q))$ is a tautology, is :

Question:

A 1

B 2

C 3

D 4

Q:21

Topic Name: Mathematics-Section B

ItemCode:101681

The number of one-one functions $f : \{a, b, c, d\} \rightarrow \{0, 1, 2, \dots, 10\}$ such that $2f(a) - f(b) + 3f(c) + f(d) = 0$ is _____.

Question:

Q:22

Topic Name: Mathematics-Section B

ItemCode:101682

In an examination, there are 5 multiple choice questions with 3 choices, out of which exactly one is correct. There are 3 marks for each correct answer, -2 marks for each wrong answer and 0 mark if the question is not attempted. Then, the number of ways a student appearing in the examination gets 5 marks is _____.

Question:

Q:23

Topic Name:Mathematics-Section B

ItemCode:101683

Let $A\left(\frac{3}{\sqrt{a}}, \sqrt{a}\right)$, $a > 0$, be a fixed point in the xy -plane. The image of A in y -axis be B and the image of B in x -axis be C. If $D(3 \cos \theta, a \sin \theta)$ is a point in the fourth quadrant such that the maximum area of ΔACD is 12 square units, then a is equal to _____.

Question:

Q:24

Topic Name:Mathematics-Section B

ItemCode:101684

Let a line having direction ratios 1, -4, 2 intersect the lines

$\frac{x-7}{3} = \frac{y-1}{-1} = \frac{z+2}{1}$ and $\frac{x}{2} = \frac{y-7}{3} = \frac{z}{1}$ at the points A and B. Then $(AB)^2$ is equal to

Question: _____.

Q:25

Topic Name:Mathematics-Section B

ItemCode:101685

The number of points where the function

$$f(x) = \begin{cases} |2x^2 - 3x - 7| & \text{if } x \leq -1 \\ [4x^2 - 1] & \text{if } -1 < x < 1 \\ |x + 1| + |x - 2| & \text{if } x \geq 1, \end{cases}$$

Question: $[t]$ denotes the greatest integer $\leq t$, is discontinuous is _____.

Q:26

Topic Name:Mathematics-Section B

ItemCode:101686

Let $f(\theta) = \sin \theta + \int_{-\pi/2}^{\pi/2} (\sin \theta + t \cos \theta) f(t) dt$. Then the value of $\left| \int_0^{\pi/2} f(\theta) d\theta \right|$ is _____.

Question:

Q:27

Topic Name:Mathematics-Section B

ItemCode:101687

Let $\text{Max}_{0 \leq x \leq 2} \left\{ \frac{9 - x^2}{5 - x} \right\} = \alpha$ and $\text{Min}_{0 \leq x \leq 2} \left\{ \frac{9 - x^2}{5 - x} \right\} = \beta$.

If $\int_{\beta - \frac{8}{3}}^{2\alpha - 1} \text{Max} \left\{ \frac{9 - x^2}{5 - x}, x \right\} dx = \alpha_1 + \alpha_2 \log_e \left(\frac{8}{15} \right)$ then $\alpha_1 + \alpha_2$ is equal to _____.

Question:

Q:28

Topic Name:Mathematics-Section B

ItemCode:101688

If two tangents drawn from a point (α, β) lying on the ellipse $25x^2 + 4y^2 = 1$ to the parabola $y^2 = 4x$ are such that the slope of one tangent is four times the other, then the value of $(10\alpha + 5)^2 + (16\beta^2 + 50)^2$ equals _____.

Question:

Q:29

Topic Name:Mathematics-Section B

ItemCode:101689

Let S be the region bounded by the curves $y = x^3$ and $y^2 = x$. The curve $y = 2|x|$ divides S into two regions of areas R_1 and R_2 .

If $\max \{R_1, R_2\} = R_2$, then $\frac{R_2}{R_1}$ is equal to _____.

Question:

Q:30

Topic Name:Mathematics-Section B

ItemCode:101690

If the shortest distance between the lines $\vec{r} = (-\hat{i} + 3\hat{k}) + \lambda(\hat{i} - a\hat{j})$ and

$\vec{r} = (-\hat{j} + 2\hat{k}) + \mu(\hat{i} - \hat{j} + \hat{k})$ is $\sqrt{\frac{2}{3}}$, then the integral value of a is equal to _____.

Question:

Q:31

Topic Name:Physics-Section A

ItemCode:101601

The bulk modulus of a liquid is $3 \times 10^{10} \text{ Nm}^{-2}$. The pressure required to reduce the volume of liquid by 2% is :

Question:

- A $3 \times 10^8 \text{ Nm}^{-2}$
- B $9 \times 10^8 \text{ Nm}^{-2}$
- C $6 \times 10^8 \text{ Nm}^{-2}$
- D $12 \times 10^8 \text{ Nm}^{-2}$

Q:32

Topic Name:Physics-Section A

ItemCode:101602

Given below are two statements : One is labelled as **Assertion (A)** and the other is labelled as **Reason (R)**.

Assertion (A) : In an uniform magnetic field, speed and energy remains the same for a moving charged particle.

Reason (R) : Moving charged particle experiences magnetic force perpendicular to its direction of motion.

Question:

- A Both (A) and (R) are true and (R) is the correct explanation of (A).
- B Both (A) and (R) are true but (R) is NOT the correct explanation of (A).
- C (A) is true but (R) is false.
- D (A) is false but (R) is true.

Q:33

Topic Name:Physics-Section A

ItemCode:101603

Two identical cells each of emf 1.5 V are connected in parallel across a parallel combination of two resistors each of resistance 20Ω . A voltmeter connected in the circuit measures

Question: 1.2 V. The internal resistance of each cell is :

- A 2.5Ω
- B 4Ω
- C 5Ω
- D 10Ω

Q:34

Topic Name:Physics-Section A

ItemCode:101604

Identify the pair of physical quantities which have different dimensions :

Question:

- A Wave number and Rydberg's constant
- B Stress and Coefficient of elasticity
- C Coercivity and Magnetisation
- D Specific heat capacity and Latent heat

Q:35

Topic Name:Physics-Section A

ItemCode:101605

A projectile is projected with velocity of 25 m/s at an angle θ with the horizontal. After t seconds its inclination with horizontal becomes zero. If R represents horizontal range of the projectile, the value of θ will be :

Question: [use $g = 10 \text{ m/s}^2$]

A	$\frac{1}{2} \sin^{-1} \left(\frac{5t^2}{4R} \right)$
B	$\frac{1}{2} \sin^{-1} \left(\frac{4R}{5t^2} \right)$
C	$\tan^{-1} \left(\frac{4t^2}{5R} \right)$
D	$\cot^{-1} \left(\frac{R}{20t^2} \right)$

Q:36

Topic Name:Physics-Section A

ItemCode:101606

A block of mass 10 kg starts sliding on a surface with an initial velocity of 9.8 ms^{-1} . The coefficient of friction between the surface and block is 0.5. The distance covered by the block before coming to rest is :

[use $g = 9.8 \text{ ms}^{-2}$]

Question:

A	4.9 m
B	9.8 m
C	12.5 m
D	19.6 m

Q:37

Topic Name:Physics-Section A

ItemCode:101607

A boy ties a stone of mass 100 g to the end of a 2 m long string and whirls it around in a horizontal plane. The string can withstand the maximum tension of 80 N. If the maximum

speed with which the stone can revolve is $\frac{K}{\pi}$ rev./min. The value of K is :

(Assume the string is massless and unstretchable)

Question:

A	400
B	300
C	600
D	800

Q:38

Topic Name:Physics-Section A

ItemCode:101608

A vertical electric field of magnitude $4.9 \times 10^5 \text{ N/C}$ just prevents a water droplet of a mass 0.1 g from falling. The value of charge on the droplet will be :

(Given $g = 9.8 \text{ m/s}^2$)

Question:

Download all NOTES and PAPERS at StudentSuvidha.com

- A $1.6 \times 10^{-9} \text{ C}$
- B $2.0 \times 10^{-9} \text{ C}$
- C $3.2 \times 10^{-9} \text{ C}$
- D $0.5 \times 10^{-9} \text{ C}$

Q:39
Topic Name:Physics-Section A

ItemCode:101609

A particle experiences a variable force $\vec{F} = (4x \hat{i} + 3y^2 \hat{j})$ in a horizontal x - y plane. Assume distance in meters and force is newton. If the particle moves from point (1, 2) to point (2, 3) in the x - y plane, then Kinetic Energy changes by :

Question:

- A 50.0 J
- B 12.5 J
- C 25.0 J
- D 0 J

Q:40
Topic Name:Physics-Section A

ItemCode:101610

The approximate height from the surface of earth at which the weight of the body becomes $\frac{1}{3}$ of its weight on the surface of earth is :

Question: [Radius of earth $R = 6400 \text{ km}$ and $\sqrt{3} = 1.732$]

- A 3840 km
- B 4685 km
- C 2133 km
- D 4267 km

Q:41
Topic Name:Physics-Section A

ItemCode:101611

A resistance of 40Ω is connected to a source of alternating current rated 220 V, 50 Hz. Find the time taken by the current to change from its maximum value to the rms value :

Question:

- A 2.5 ms
- B 1.25 ms
- C 2.5 s
- D 0.25 s

Q:42
Topic Name:Physics-Section A

ItemCode:101612

The equations of two waves are given by :

$$y_1 = 5 \sin 2\pi(x - vt) \text{ cm}$$

$$y_2 = 3 \sin 2\pi(x - vt + 1.5) \text{ cm}$$

These waves are simultaneously passing through a string. The amplitude of the resulting wave is :

Question:

- A 2 cm
- B 4 cm
- C 5.8 cm
- D 8 cm

Q:43

Topic Name:Physics-Section A

ItemCode:101613

A plane electromagnetic wave travels in a medium of relative permeability 1.61 and relative permittivity 6.44. If magnitude of magnetic intensity is $4.5 \times 10^{-2} \text{ Am}^{-1}$ at a point, what will be the approximate magnitude of electric field intensity at that point ?

(Given : Permeability of free space $\mu_0 = 4\pi \times 10^{-7} \text{ NA}^{-2}$, speed of light in vacuum $c = 3 \times 10^8 \text{ ms}^{-1}$)

Question:

- A 16.96 Vm^{-1}
- B $2.25 \times 10^{-2} \text{ Vm}^{-1}$
- C 8.48 Vm^{-1}
- D $6.75 \times 10^6 \text{ Vm}^{-1}$

Q:44

Topic Name:Physics-Section A

ItemCode:101614

Choose the **correct** option from the following options given below :

Question:

- A In the ground state of Rutherford's model electrons are in stable equilibrium. While in Thomson's model electrons always experience a net-force.
- B An atom has a nearly continuous mass distribution in a Rutherford's model but has a highly non-uniform mass distribution in Thomson's model
- C A classical atom based on Rutherford's model is doomed to collapse.
- D The positively charged part of the atom possesses most of the mass in Rutherford's model but not in Thomson's model.

Q:45

Topic Name:Physics-Section A

ItemCode:101615

Nucleus A is having mass number 220 and its binding energy per nucleon is 5.6 MeV. It splits in two fragments 'B' and 'C' of mass numbers 105 and 115. The binding energy of nucleons in 'B' and 'C' is 6.4 MeV per nucleon. The energy Q released per fission will be :

Question:

Download all NOTES and PAPERS at StudentSuvidha.com

- A 0.8 MeV
- B 275 MeV
- C 220 MeV
- D 176 MeV

Q:46
Topic Name:Physics-Section A

ItemCode:101616

A baseband signal of 3.5 MHz frequency is modulated with a carrier signal of 3.5 GHz frequency using amplitude modulation method. What should be the minimum size of antenna required to transmit the modulated signal ?

- Question:
- A 42.8 m
 - B 42.8 mm
 - C 21.4 mm
 - D 21.4 m

Q:47
Topic Name:Physics-Section A

ItemCode:101617

A Carnot engine whose heat sinks at 27°C, has an efficiency of 25%. By how many degrees should the temperature of the source be changed to increase the efficiency by 100% of the original efficiency ?

- Question:
- A Increases by 18°C
 - B Increases by 200°C
 - C Increases by 120°C
 - D Increases by 73°C

Q:48
Topic Name:Physics-Section A

ItemCode:101618

A parallel plate capacitor is formed by two plates each of area $30\pi \text{ cm}^2$ separated by 1 mm. A material of dielectric strength $3.6 \times 10^7 \text{ Vm}^{-1}$ is filled between the plates. If the maximum charge that can be stored on the capacitor without causing any dielectric breakdown is $7 \times 10^{-6} \text{ C}$, the value of dielectric constant of the material is :

Question:

[Use $\frac{1}{4\pi\epsilon_0} = 9 \times 10^9 \text{ Nm}^2 \text{ C}^{-2}$]

- A 1.66
- B 1.75
- C 2.25
- D 2.33

ItemCode:101619

The magnetic field at the centre of a circular coil of radius r , due to current I flowing through it, is B . The magnetic field at a point along the axis at a distance $\frac{r}{2}$ from the centre

Question: is :

- A $B/2$
- B $2B$
- C $\left(\frac{2}{\sqrt{5}}\right)^3 B$
- D $\left(\frac{2}{\sqrt{3}}\right)^3 B$

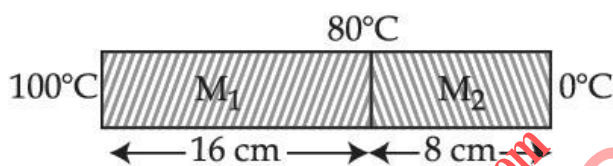
Q:50

Topic Name: Physics-Section A

ItemCode:101620

Two metallic blocks M_1 and M_2 of same area of cross-section are connected to each other (as shown in figure). If the thermal conductivity of M_2 is K then the thermal conductivity of M_1 will be :

[Assume steady state heat conduction]



Question:

- A 10 K
- B 8 K
- C 12.5 K
- D 2 K

Q:51

Topic Name: Physics-Section B

ItemCode:101621

0.056 kg of Nitrogen is enclosed in a vessel at a temperature of 127°C . The amount of heat required to double the speed of its molecules is _____ k cal.

(Take $R = 2 \text{ cal mole}^{-1} \text{ K}^{-1}$)

Question:

Q:52

Topic Name: Physics-Section B

ItemCode:101622

Two identical thin biconvex lenses of focal length 15 cm and refractive index 1.5 are in contact with each other. The space between the lenses is filled with a liquid of refractive index 1.25. The focal length of the combination is _____ cm.

Question:

Q:53

Topic Name: Physics-Section B

ItemCode:101623

A transistor is used in common-emitter mode in an amplifier circuit. When a signal of 10 mV is added to the base-emitter voltage, the base current changes by 10 μ A and the collector current changes by 1.5 mA. The load resistance is 5 k Ω . The voltage gain of the transistor will be _____.

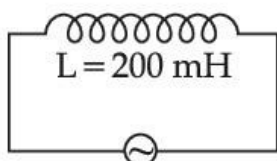
Question:

Q:54

Topic Name:Physics-Section B

ItemCode:101624

As shown in the figure an inductor of inductance 200 mH is connected to an AC source of emf 220 V and frequency 50 Hz. The instantaneous voltage of the source is 0 V when the peak value of current is $\frac{\sqrt{a}}{\pi}$ A. The value of a is _____.



Question:

Q:55

Topic Name:Physics-Section B

ItemCode:101625

Sodium light of wavelengths 650 nm and 655 nm is used to study diffraction at a single slit of aperture 0.5 mm. The distance between the slit and the screen is 2.0 m. The separation between the positions of the first maxima of diffraction pattern obtained in the two cases is _____ $\times 10^{-5}$ m.

Question:

Q:56

Topic Name:Physics-Section B

ItemCode:101626

When light of frequency twice the threshold frequency is incident on the metal plate, the maximum velocity of emitted electron is v_1 . When the frequency of incident radiation is increased to five times the threshold value, the maximum velocity of emitted electron becomes v_2 . If $v_2 = x v_1$, the value of x will be _____.

Question:

Q:57

Topic Name:Physics-Section B

ItemCode:101627

From the top of a tower, a ball is thrown vertically upward which reaches the ground in 6 s. A second ball thrown vertically downward from the same position with the same speed reaches the ground in 1.5 s. A third ball released, from the rest from the same location, will reach the ground in _____ s.

Question:

Q:58

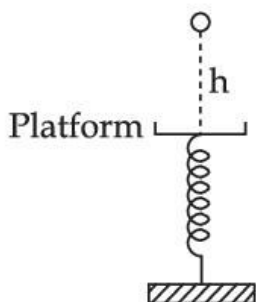
Topic Name:Physics-Section B

ItemCode:101628

A ball of mass 100 g is dropped from a height $h = 10$ cm on a platform fixed at the top of a vertical spring (as shown in figure). The ball stays on the platform and the platform is

depressed by a distance $\frac{h}{2}$. The spring constant is _____ Nm^{-1} .

(Use $g = 10 \text{ ms}^{-2}$)



Question:

Q:59

Topic Name:Physics-Section B

ItemCode:101629

In a potentiometer arrangement, a cell gives a balancing point at 75 cm length of wire. This cell is now replaced by another cell of unknown emf. If the ratio of the emf's of two cells respectively is 3 : 2, the difference in the balancing length of the potentiometer wire in above

two cases will be _____ cm.

Question:

Q:60

Topic Name:Physics-Section B

ItemCode:101630

A metre scale is balanced on a knife edge at its centre. When two coins, each of mass 10 g are put one on the top of the other at the 10.0 cm mark the scale is found to be balanced at 40.0 cm mark. The mass of the metre scale is found to be $x \times 10^{-2}$ kg. The value of x is

Question: _____.

Q:61

Topic Name:Chemistry-Section A

ItemCode:101631

If a rocket runs on a fuel ($\text{C}_{15}\text{H}_{30}$) and liquid oxygen, the weight of oxygen required and CO_2 released for every litre of fuel respectively are :

(Given : density of the fuel is 0.756 g/mL)

Question:

- A 1188 g and 1296 g
- B 2376 g and 2592 g
- C 2592 g and 2376 g
- D 3429 g and 3142 g

Q:62

Topic Name:Chemistry-Section A

Consider the following pairs of electrons

(A) (a) $n=3, l=1, m_l=1, m_s = +\frac{1}{2}$

(b) $n=3, l=2, m_l=1, m_s = +\frac{1}{2}$

(B) (a) $n=3, l=2, m_l=-2, m_s = -\frac{1}{2}$

(b) $n=3, l=2, m_l=-1, m_s = -\frac{1}{2}$

(C) (a) $n=4, l=2, m_l=2, m_s = +\frac{1}{2}$

(b) $n=3, l=2, m_l=2, m_s = +\frac{1}{2}$

Question: The pairs of electrons present in degenerate orbitals is/are :

A Only (A)

B Only (B)

C Only (C)

D (B) and (C)

Q:63

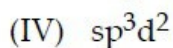
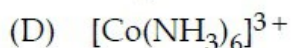
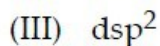
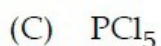
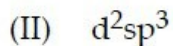
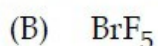
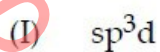
Topic Name:Chemistry-Section A

ItemCode:101633

Match List - I with List - II :

List - I

List - II



Question: Choose the **most appropriate** answer from the options given below :

A (A)-(II), (B)-(IV), (C)-(I), (D)-(III)

B (A)-(III), (B)-(IV), (C)-(I), (D)-(II)

C (A)-(III), (B)-(I), (C)-(IV), (D)-(II)

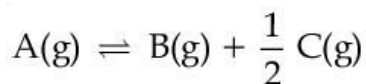
D (A)-(II), (B)-(I), (C)-(IV), (D)-(III)

Q:64

Topic Name:Chemistry-Section A

ItemCode:101634

For a reaction at equilibrium



the relation between dissociation constant (K), degree of dissociation (α) and equilibrium pressure (p) is given by :

Question:

A

$$K = \frac{\alpha^{\frac{1}{2}} p^{\frac{3}{2}}}{\left(1 + \frac{3}{2}\alpha\right)^{\frac{1}{2}} (1 - \alpha)}$$

B

$$K = \frac{\alpha^{\frac{3}{2}} p^{\frac{1}{2}}}{(2 + \alpha)^{\frac{1}{2}} (1 - \alpha)}$$

C

$$K = \frac{(\alpha p)^{\frac{3}{2}}}{\left(1 + \frac{3}{2}\alpha\right)^{\frac{1}{2}} (1 - \alpha)}$$

D

$$K = \frac{(\alpha p)^{\frac{3}{2}}}{(1 + \alpha) (1 - \alpha)^{\frac{1}{2}}}$$

Q:65

Topic Name:Chemistry-Section A

ItemCode:101635

Given below are two statements :

Statement I : Emulsions of oil in water are unstable and sometimes they separate into two layers on standing.

Statement II : For stabilisation of an emulsion, excess of electrolyte is added.

In the light of the above statements, choose the most appropriate answer from the options given below :

Question:

A

Both **Statement I** and **Statement II** are correct.

B

Both **Statement I** and **Statement II** are incorrect.

C

Statement I is correct but **Statement II** is incorrect.

D

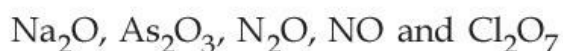
Statement I is incorrect but **Statement II** is correct.

Q:66

Topic Name:Chemistry-Section A

ItemCode:101636

Given below are the oxides :



Number of amphoteric oxides is :

Question:

A

0

B

1

C 2

D 3

Q:67

Topic Name:Chemistry-Section A

ItemCode:101637

Match List - I with List - II :

List - I	List - II
(A) Sphalerite	(I) FeCO_3
(B) Calamine	(II) PbS
(C) Galena	(III) ZnCO_3
(D) Siderite	(IV) ZnS

Choose the **most appropriate** answer from the options given below :

Question:

A (A)-(IV), (B)-(III), (C)-(II), (D)-(I)

B (A)-(IV), (B)-(I), (C)-(II), (D)-(III)

C (A)-(II), (B)-(III), (C)-(I), (D)-(IV)

D (A)-(III), (B)-(IV), (D)-(II), (D)-(I)

Q:68

Topic Name:Chemistry-Section A

ItemCode:101638

The highest industrial consumption of molecular hydrogen is to produce compounds of element :

Question:

A Carbon

B Nitrogen

C Oxygen

D Chlorine

Q:69

Topic Name:Chemistry-Section A

ItemCode:101639

Which of the following statements are **correct** ?

(A) Both LiCl and MgCl_2 are soluble in ethanol.

(B) The oxides Li_2O and MgO combine with excess of oxygen to give superoxide.

(C) LiF is less soluble in water than other alkali metal fluorides.

(D) Li_2O is more soluble in water than other alkali metal oxides.

Choose the **most appropriate** answer from the options given below :

Question:

A (A) and (C) only

B (A), (C) and (D) only

C (B) and (C) only

D (A) and (D) only

Q:70

Topic Name: Chemistry-Section A

ItemCode: 101640

Identify the correct statement for B_2H_6 from those given below.

- (A) In B_2H_6 , all B-H bonds are equivalent.
- (B) In B_2H_6 , there are four 3-centre-2-electron bonds.
- (C) B_2H_6 is a Lewis acid.
- (D) B_2H_6 can be synthesized from both BF_3 and $NaBH_4$.
- (E) B_2H_6 is a planar molecule.

Question: Choose the **most appropriate** answer from the options given below :

A (A) and (E) only

B (B), (C) and (E) only

C (C) and (D) only

D (C) and (E) only

Q:71

Topic Name: Chemistry-Section A

ItemCode: 101641

The most stable trihalide of nitrogen is :

Question:

A NF_3

B NCl_3

C NBr_3

D NI_3

Q:72

Topic Name: Chemistry-Section A

ItemCode: 101642

Which one of the following elemental forms is **not** present in the enamel of the teeth ?

Question:

A Ca^{2+}

B P^{3+}

C F^-

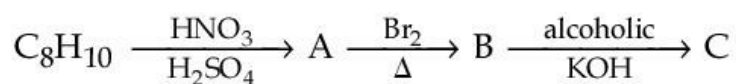
D P^{5+}

Q:73

Topic Name: Chemistry-Section A

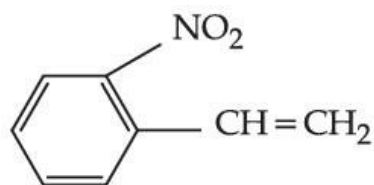
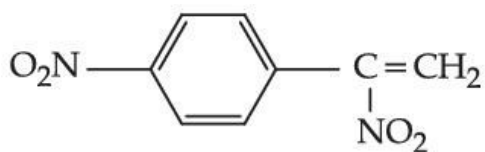
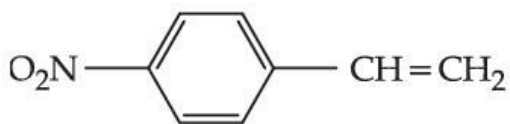
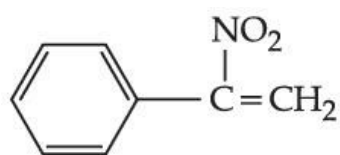
ItemCode: 101643

In the given reaction sequence, the major product 'C' is :



Question:

Download all NOTES and PAPERS at StudentSuvidha.com



Q:74

Topic Name: Chemistry-Section A

ItemCode: 101644

Two statements are given below :

Statement I : The melting point of monocarboxylic acid with even number of carbon atoms is higher than that of with odd number of carbon atoms acid immediately below and above it in the series.

Statement II : The solubility of monocarboxylic acids in water decreases with increase in molar mass.

Choose the most appropriate option :

Question:

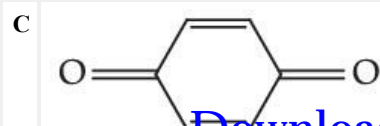
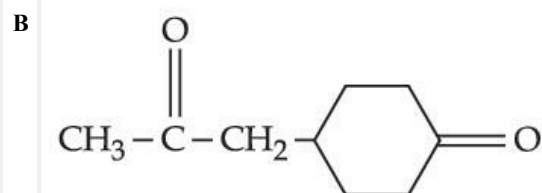
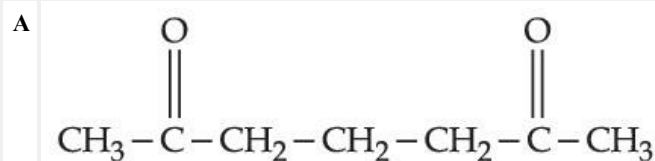
- A Both **Statement I** and **Statement II** are correct.
- B Both **Statement I** and **Statement II** are incorrect.
- C **Statement I** is correct but **Statement II** is incorrect.
- D **Statement I** is incorrect but **Statement II** is correct.

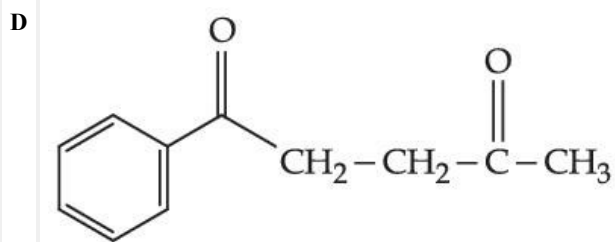
Q:75

Topic Name: Chemistry-Section A

ItemCode: 101645

Question: Which of the following is an example of conjugated diketone ?

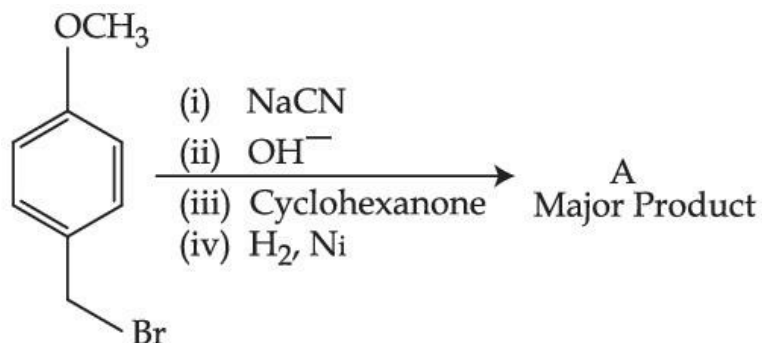




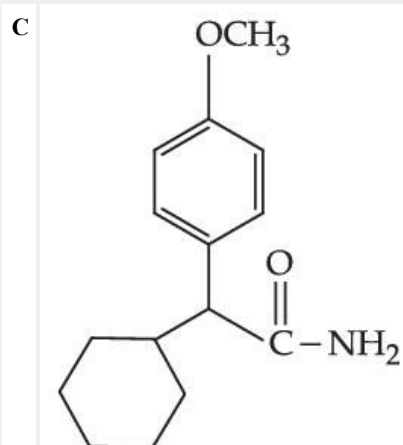
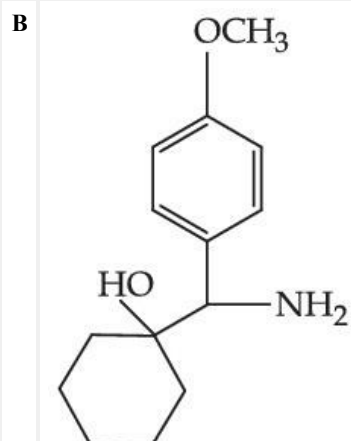
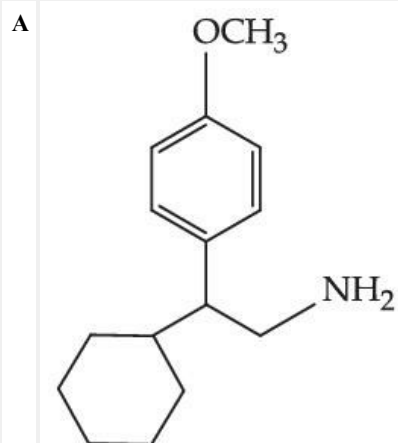
Q:76

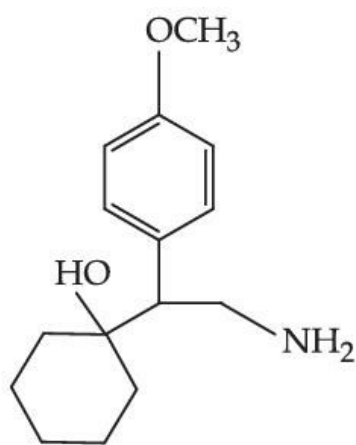
Topic Name: Chemistry-Section A

ItemCode: 101646



Question: The major product of the above reactions is :





Q:77

Topic Name:Chemistry-Section A

ItemCode:101647

Question: Which of the following is an example of polyester ?

- A Butadiene-styrene copolymer
- B Melamine polymer
- C Neoprene
- D Poly- β -hydroxybutyrate-co- β -hydroxyvalerate

Q:78

Topic Name:Chemistry-Section A

ItemCode:101648

Question: A polysaccharide 'X' on boiling with dil H_2SO_4 at 393 K under 2-3 atm pressure yields 'Y'. 'Y' on treatment with bromine water gives gluconic acid. 'X' contains β -glycosidic linkages only. Compound 'X' is :

- A starch
- B cellulose
- C amylose
- D amylopectin

Q:79

Topic Name:Chemistry-Section A

ItemCode:101649

Question: Which of the following is **not** a broad spectrum antibiotic ?

- A Vancomycin
- B Ampicillin
- C Ofloxacin
- D Penicillin G

Q:80

Topic Name:Chemistry-Section A

ItemCode:101650

During the qualitative analysis of salt with cation y^{2+} , addition of a reagent (X) to alkaline solution of the salt gives a bright red precipitate. The reagent (X) and the cation (y^{2+}) present respectively are :

Question:

- A Dimethylglyoxime and Ni^{2+}
- B Dimethylglyoxime and Co^{2+}
- C Nessler's reagent and Hg^{2+}
- D Nessler's reagent and Ni^{2+}

Q:81

Topic Name:Chemistry-Section B

ItemCode:101651

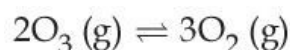
Atoms of element X form hcp lattice and those of element Y occupy $\frac{2}{3}$ of its tetrahedral voids. The percentage of element X in the lattice is _____. (Nearest integer)

Question:

Q:82

Topic Name:Chemistry-Section B

ItemCode:101652



At 300 K, ozone is fifty percent dissociated. The standard free energy change at this temperature and 1 atm pressure is (-) _____ J mol⁻¹. (Nearest integer)

Question: [Given : $\ln 1.35 = 0.3$ and $R = 8.3 \text{ J K}^{-1} \text{ mol}^{-1}$]

Q:83

Topic Name:Chemistry-Section B

ItemCode:101653

The osmotic pressure of blood is 7.47 bar at 300 K. To inject glucose to a patient intravenously, it has to be isotonic with blood. The concentration of glucose solution in gL⁻¹ is _____. (Molar mass of glucose = 180 g mol⁻¹)

Question: ($R = 0.083 \text{ L bar K}^{-1} \text{ mol}^{-1}$) (Nearest integer)

Q:84

Topic Name:Chemistry-Section B

ItemCode:101654

The cell potential for the following cell



is 0.576 V at 298 K. The pH of the solution is _____. (Nearest integer)

Question: (Given : $E^\circ_{Cu^{2+}/Cu} = 0.34 \text{ V}$ and $\frac{2.303 RT}{F} = 0.06 \text{ V}$)

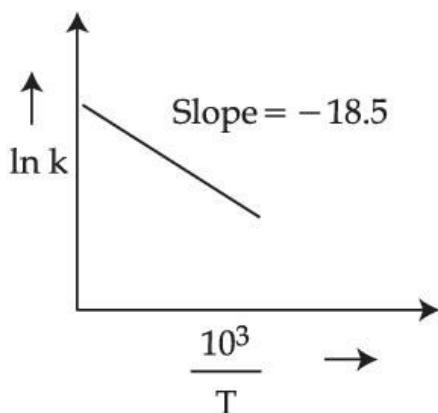
Q:85

Topic Name:Chemistry-Section B

ItemCode:101655

The rate constants for decomposition of acetaldehyde have been measured over the temperature range 700 – 1000 K. The data has been analysed by plotting $\ln k$ vs $\frac{10^3}{T}$ graph.

The value of activation energy for the reaction is _____ kJ mol^{-1} . (Nearest integer)
(Given : $R = 8.31 \text{ J K}^{-1} \text{ mol}^{-1}$)



Question:

Q:86

Topic Name:Chemistry-Section B

ItemCode:101656

Question: The difference in oxidation state of chromium in *chromate* and *dichromate* salts is _____.

Q:87

Topic Name:Chemistry-Section B

ItemCode:101657

Question: In the cobalt-carbonyl complex : $[\text{Co}_2(\text{CO})_8]$, number of Co-Co bonds is "X" and terminal CO ligands is "Y". $X + Y =$ _____.

Q:88

Topic Name:Chemistry-Section B

ItemCode:101658

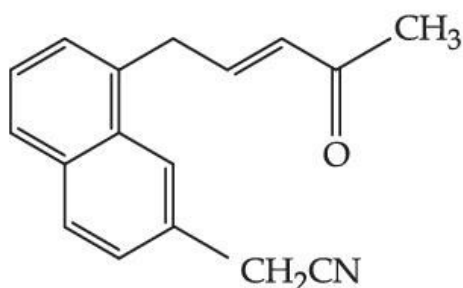
Question: A 0.166 g sample of an organic compound was digested with conc. H_2SO_4 and then distilled with NaOH. The ammonia gas evolved was passed through 50.0 mL of 0.5 N H_2SO_4 . The used acid required 30.0 mL of 0.25 N NaOH for complete neutralization. The mass percentage of nitrogen in the organic compound is _____.

Q:89

Topic Name:Chemistry-Section B

ItemCode:101659

Number of electrophillic centres in the given compound is _____.

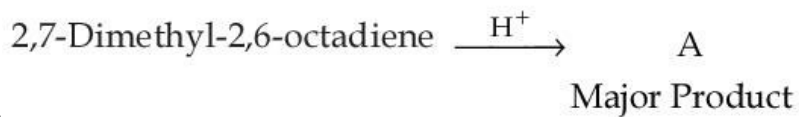


Question:

Q:90

ItemCode: 101660

The major product 'A' of the following given reaction has _____ sp^2 hybridized carbon atoms.



Question:

downloaded from
StudentSuvidha.com